



CONSIGLIATO & PROPOSTO
in Italia da:



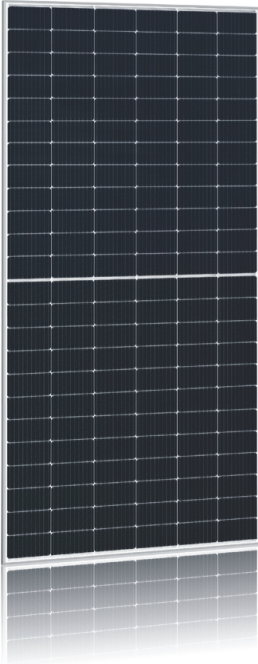
The Power of EU WARRANTY

PV module **PREMIUM**

540W | 545W | 550W

monocrystalline

SV144M.5.3-540 | SV144M.5.3-545 | SV144M.5.3-550



HALF-CUT technology

Higher power and lower losses



Reduced HOT SPOT



SELF-C nanotechnology

Module with self-cleaning surface



MULTI BUSBAR

Increased fault-free operation and higher power



PERC cells

Top performance with state-of-the-art cell technology



PID free

Increased resistance to potential-induced degradation



+5

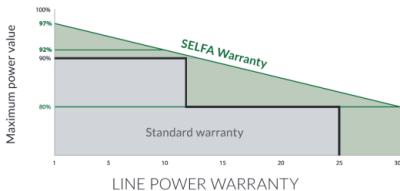
Positive power tolerance only



5400 Pa

Increased mechanical strenght

SELFA Warranty



15 YEARS
POLISH PRODUCT
WARRANTY



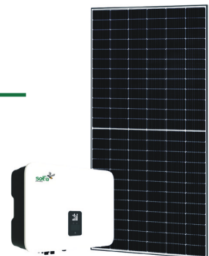
30 YEARS OF
POLISH POWER
WARRANTY



TESTED IN R&D CENTER
OF SELFA

Manufacturer of PV modules and inverters

Also available with Selfa inverters



Technical specification

MODULE TYPE		SV144M.5.3-540	SV144M.5.3-545	SV144M.5.3-550
Nominal power (-0;+5W)	P _{MPP} [W]	540	545	550
Open circuit voltage	V _{OC} [V]	49,4	49,6	49,8
Maximum power voltage	V _{MPP} [V]	41,2	41,4	41,6
Short-circuit current	I _{SC} [A]	13,87	13,93	13,99
Maximum power point current	I _{MPP} [A]	13,11	13,17	13,23
Fill factor	FF [%]	78,8	78,9	79,0
Efficiency	[%]	20,9	21,1	21,3
Number of bypass diodes	[szt.]	3		
Connection box protection rating	[-]	IP68		
Glass specification	[-]	3,2mm; prismatic; toughened / AR-antireflection in glass structure		
Total weight	[kg]	29		
Connectors		S = 4 mm ² , L = 2 x 300 mm, MC4		

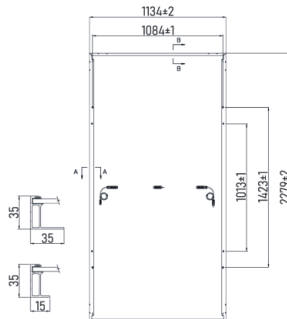
nominal values for standard testing conditions - STC (AM 1.5; 1000W/m²; 25°C); tolerance ±5%

TEMPERATURE COEFFICIENTS	P _{MAX} : -0,36% /°C	I _{SC} : 0,06% /°C	V _{OC} : -0,3% /°C
PV module operating range	Operating temperature: -40 ÷ +85°C		Max. System voltage: 1500VDC
	Ambient temperature: -40 ÷ +45°C		Protection value: 25A

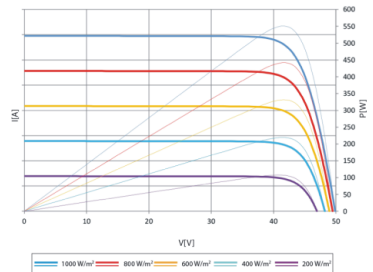
NOCT 41±2°C

MODULE TYPE		SV144M.5.3-540	SV144M.5.3-545	SV144M.5.3-550	MECHANICAL STRENGTH
Nominal power (-0;+5W)	P _{MPP} [W]	402	406	410	
Open circuit voltage	V _{OC} [V]	46,3	46,4	46,6	
Maximum power voltage	V _{MPP} [V]	38,4	38,6	38,8	
Short-circuit current	I _{SC} [A]	11,18	11,23	11,28	
Maximum power point current	I _{MPP} [A]	10,49	10,54	10,58	

nominal values for the NOCT test conditions (AM 1.5; 800W/m²; 20°C, wind 1m/s)



MODULE DIMENSIONS



CURRENT-VOLTAGE CHARACTERISTIC